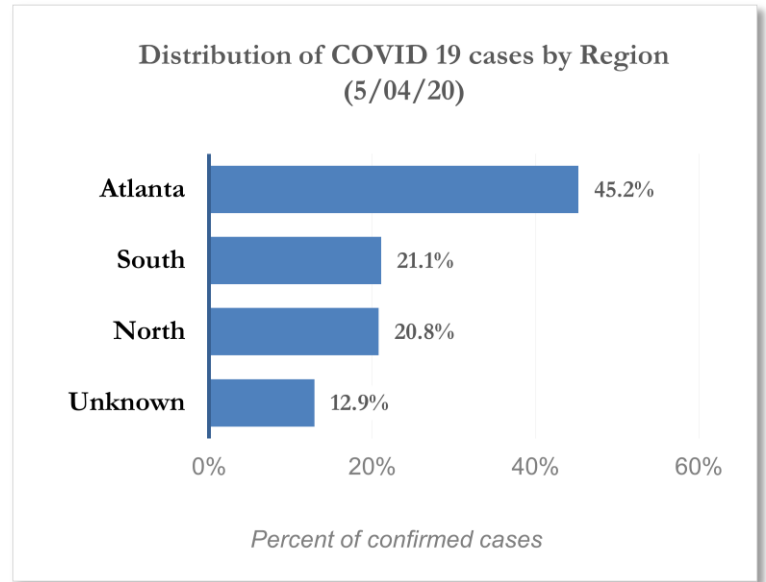


**DISTRIBUTION OF COVID-19 DIAGNOSES BY REGION**

Fulton Region	% of total cases in Fulton county
Atlanta	45.2%
North <sup>1</sup>	20.8%
South <sup>2</sup>	21.1%
Unincorporated/Unknown	12.9%

<sup>1</sup>Includes all Fulton County cities north of Atlanta metro (Alpharetta, Milton, Johns Creek, Roswell, Sandy Springs, Mountain Park)

<sup>2</sup>Includes all cities south of Atlanta (College Park, Chattahoochee Hills, East Point, Hapeville, Palmetto, South Fulton, Fairburn, Union City)



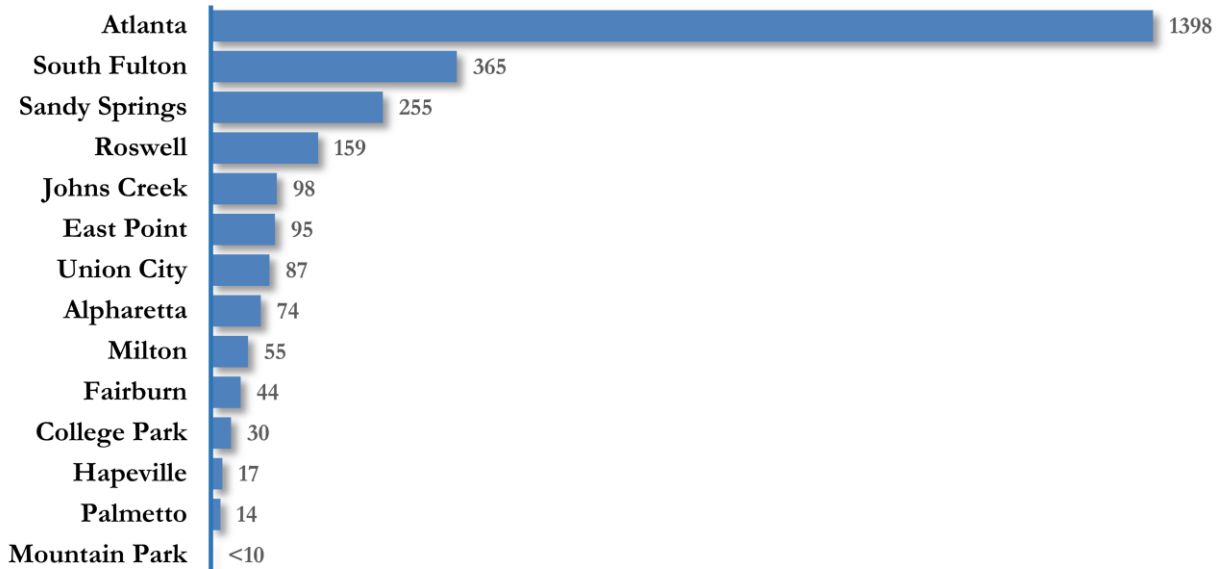
**DISTRIBUTION OF COVID-19 DIAGNOSES BY CITY**

	Previous Count (5/01/2020)	Current Count (5/04/20)	Percent of Current Total	% Change	COVID-19 Diagnoses Rate (per 100,000 persons)*
Atlanta	1314	1398	45.2%	6.4%	316.9
South Fulton	351	365	11.8%	4.0%	383.8
Sandy Springs	232	255	8.2%	9.9%	241.9
Roswell	140	159	5.1%	13.6%	168.7
East Point	93	95	3.1%	2.2%	271.6
Johns Creek	93	98	3.2%	5.4%	117.2
Union City	82	87	2.8%	6.1%	415.1
Alpharetta	67	74	2.4%	10.4%	114.4
Milton	52	55	1.8%	5.8%	144.1
Fairburn	40	44	1.4%	10.0%	299.2
College Park	30	30	1.0%	0.0%	216.2
Palmetto	13	14	0.5%	7.7%	320.2
Hapeville	16	17	0.5%	6.3%	258.3
Mountain Park	<10	<10	0.0%	0.0%	160.0
Unknown	372	399	12.9%	-	-

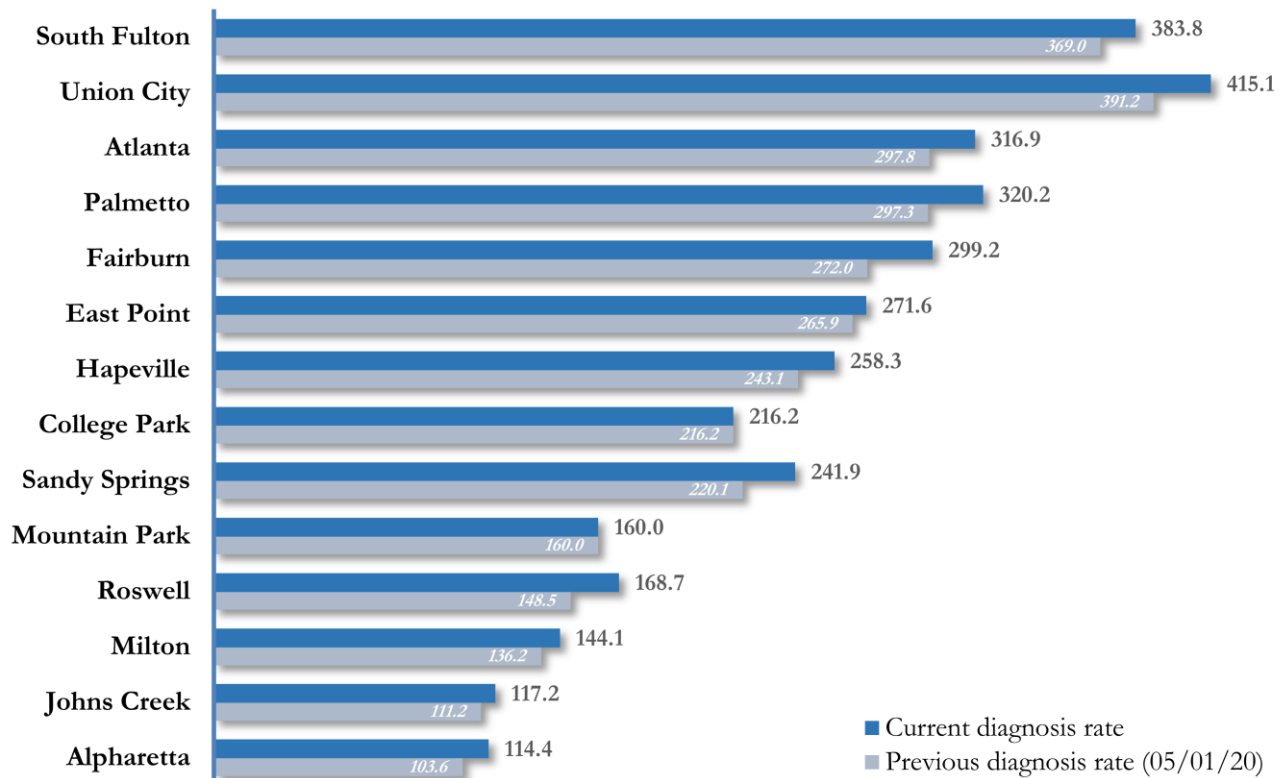
\*Source: US Census Bureau. Population estimates (as at July 1, 2018) used to calculate diagnoses rate. Please note that population count used to calculate diagnosis rate in Atlanta only reflects the Fulton County portion of the city (excludes 10% or thereabouts in DeKalb). This also applies to College Park's numbers (excludes the part in Clayton).

\*\* Data cleaning (either during detailed data collection that takes place at case interviews or during the geo-coding process) may lead to reassignment of few cases from one territory to another and these may appear as "decreases" when compared to the previous day's count. These do not reflect errors in the data collection or analysis process but only reflect the minor day-to-day fluctuations in case counts that arise in an evolving public health database like COVID's.

Number of confirmed COVID-19 Diagnoses in Fulton County by City (5/04/20)

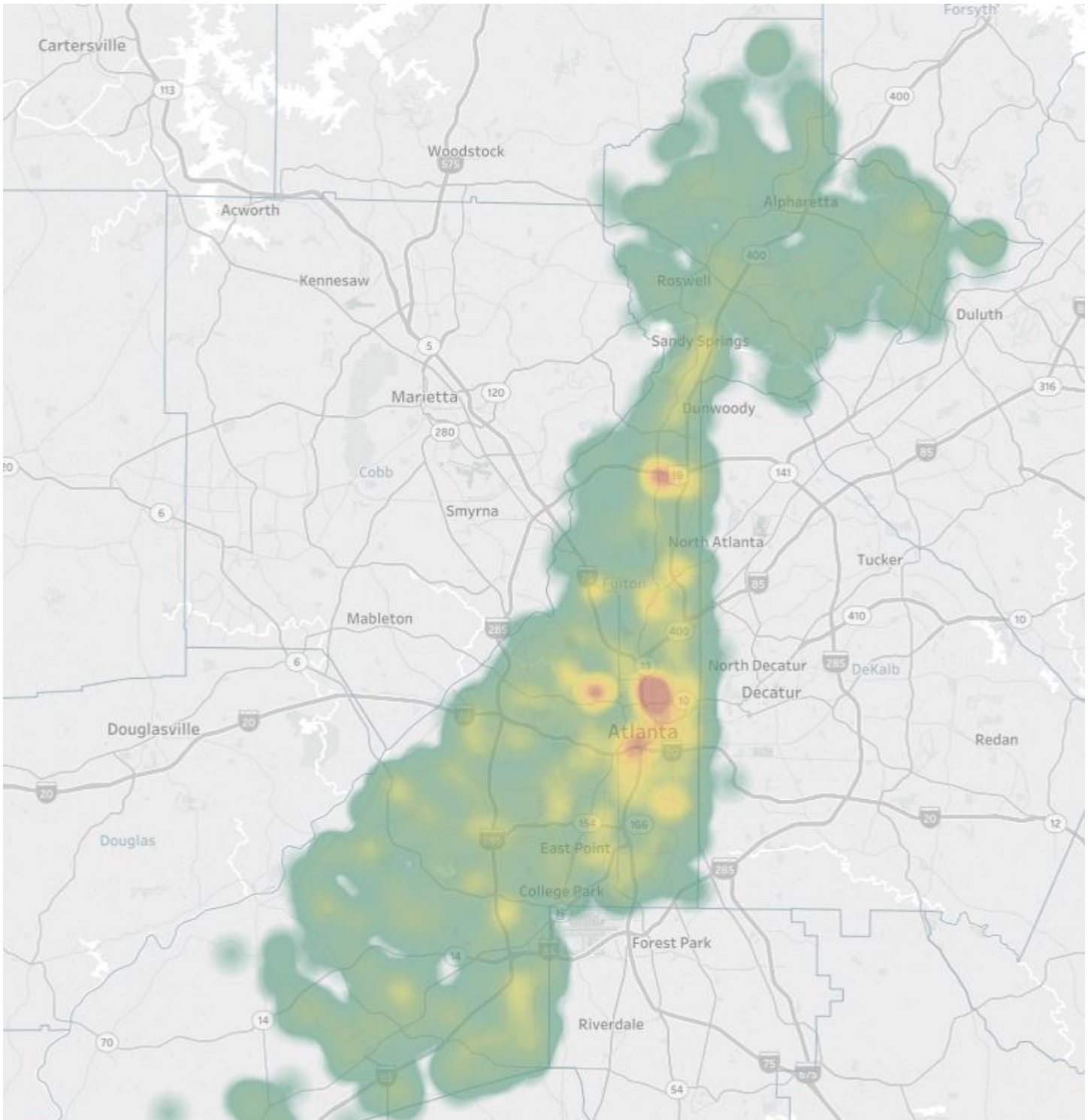


COVID-19 Diagnoses Rate in Fulton County by City (5/04/20)



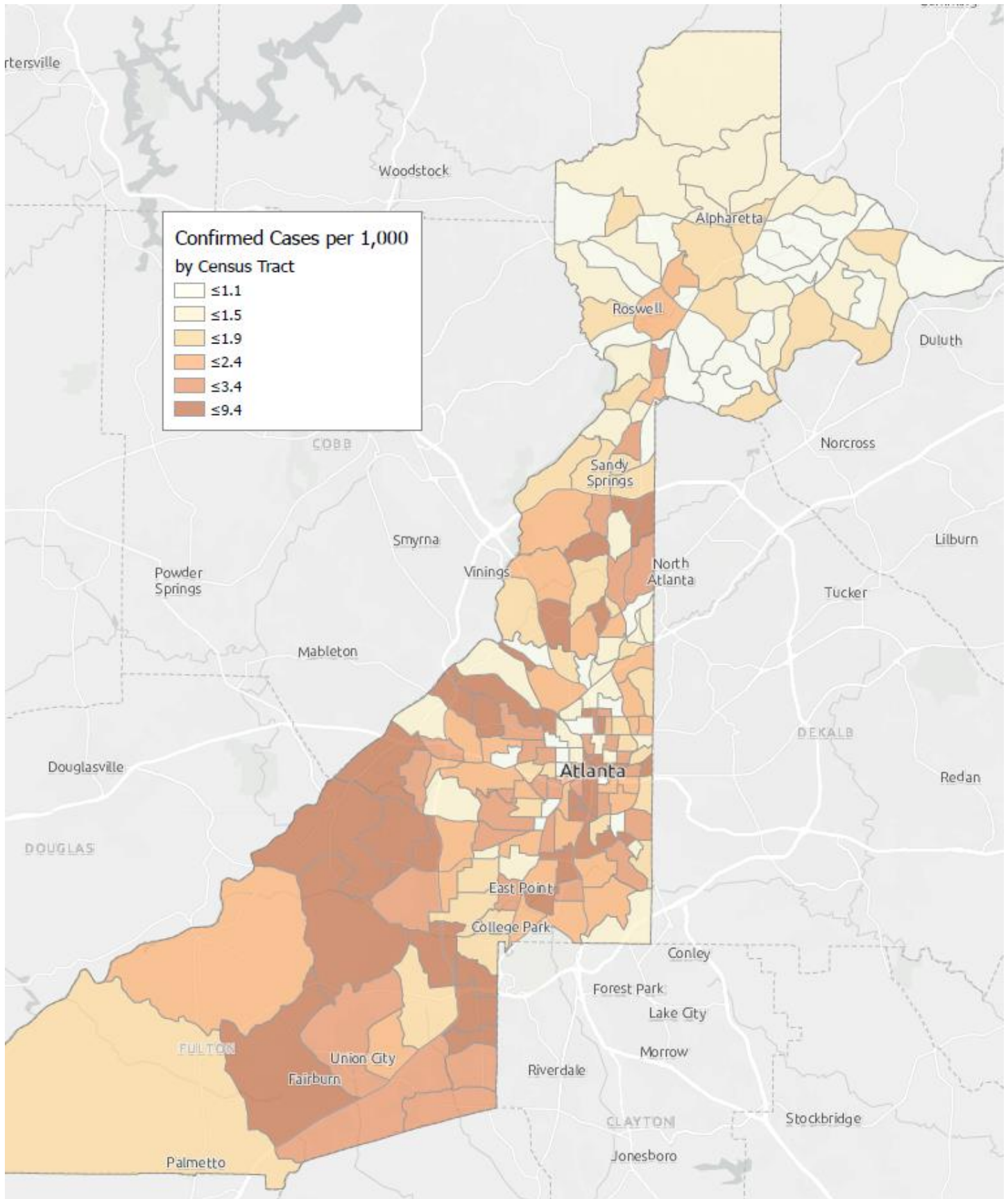
\*Rates shown are per 100,000 persons

Density Map of COVID-19 Cases in Fulton County (5/04/20)



NB. Data used excludes the outbreak-related cases diagnosed at long-term care facilities and reflects the current geographical distribution of COVID19 diagnoses in the general Fulton County community.

### COVID-19 Distribution by Census Tract (5/04/2020)



NB. Data used excludes the outbreak-related cases diagnosed at long-term care facilities and reflects the current geographical distribution of COVID19 diagnoses in the general Fulton County community.

## DISTRIBUTION COVID-19 DIAGNOSES BY ZIP CODE

ZIP code	Previous Count (5/01/2020)	Current Count (5/04/20)	Percent of Current Total	% Change
30331	271	278	9.0%	2.6%
30318	158	172	5.6%	8.9%
30349	183	192	6.2%	4.9%
30213	113	118	3.8%	4.4%
30315	102	104	3.4%	2.0%
30344	90	92	3.0%	2.2%
30311	97	100	3.2%	3.1%
30342	124	140	4.5%	12.9%
30314	63	63	2.0%	0.0%
30310	74	84	2.7%	13.5%
30308	64	67	2.2%	4.7%
30022	69	72	2.3%	4.3%
30327	62	72	2.3%	16.1%
30004	70	73	2.4%	4.3%
30309	96	106	3.4%	10.4%
30076	54	60	1.9%	11.1%
30291	110	114	3.7%	3.6%
30350	55	59	1.9%	7.3%
30075	73	87	2.8%	19.2%
30328	59	68	2.2%	15.3%
30316	32	33	1.1%	3.1%
30312	167	174	5.6%	4.2%
30005	39	40	1.3%	2.6%
30305	49	56	1.8%	14.3%
30306	37	36	1.2%	-2.7%**
30324	45	48	1.6%	6.7%
30337	24	24	0.8%	0.0%
30009	29	32	1.0%	10.3%
30313	27	28	0.9%	3.7%
30326	16	20	0.6%	25.0%
30097	32	33	1.1%	3.1%
30354	29	32	1.0%	10.3%
30303	29	31	1.0%	6.9%
30339	<10	10	0.3%	-
30268	16	18	0.6%	12.5%
30307	11	11	0.4%	0.0%
30319	15	16	0.5%	6.7%
30336	10	10	0.3%	0.0%
30296	<10	<10	0.3%	-
30363	<10	<10	0.2%	-
30301	<10	<10	0.1%	-
30345	<10	<10	0.1%	-
31131	<10	<10	0.1%	-
30023	<10	<10	0.1%	-
30080	<10	<10	0.1%	-
30135	<10	<10	0.0%	-

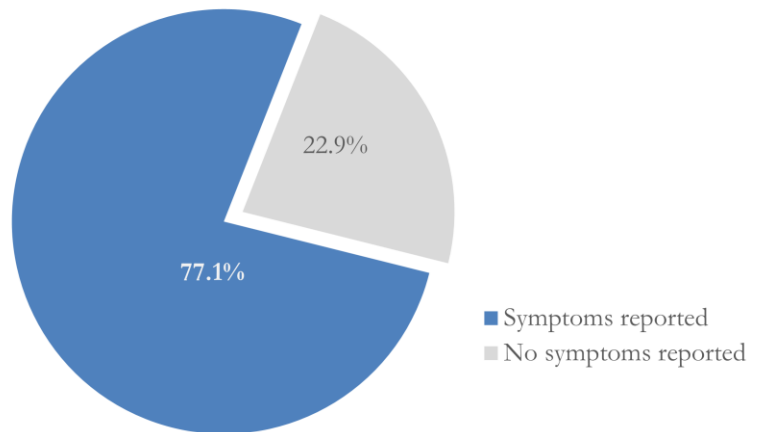


30138	<10	<10	0.0%	-
30139	<10	<10	0.0%	-
30321	<10	<10	0.1%	-
30340	<10	<10	0.2%	-
30341	<10	<10	0.2%	-
30358	<10	<10	0.0%	-
30374	15	18	0.6%	20.0%
30606	<10	<10	0.0%	-
31150	<10	<10	0.0%	-
Unknown	234	254	8.2%	-

\*\* Data cleaning (either during the detailed data collection that takes place at case interviews or during the geo-coding process) may lead to reassignment of few cases from one territory to another and these may appear as “decreases” when compared to the previous day’s count. These do not reflect errors in the data collection or analysis process but only reflect the minor day-to-day fluctuations in case counts that arise in an evolving public health database like COVID’s.

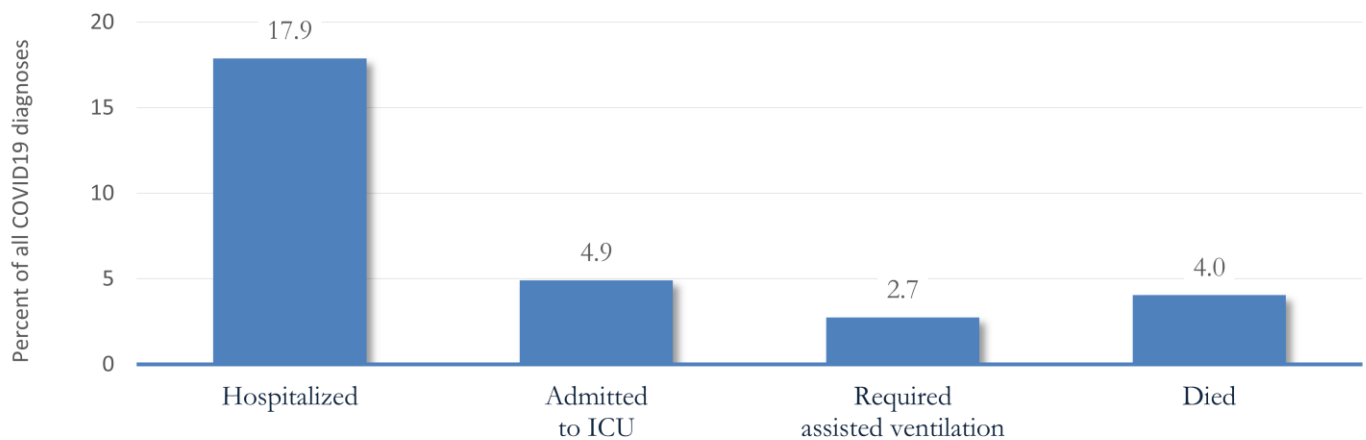
### CLINICAL OUTCOMES – FULTON COUNTY COVID-19 DIAGNOSES

Proportion reporting Symptoms (5/04/20)



\*\*\*Among COVID-19 cases who have been case interviewed or had medical charts reviewed as at 5/04/20 only\*\*\*

Hospitalizations, ICU Admissions and Deaths among COVID-19 Diagnoses in Fulton County (5/04/20)



\*\*\* Each bar represents the proportion among all COVID19 cases\*\*\*