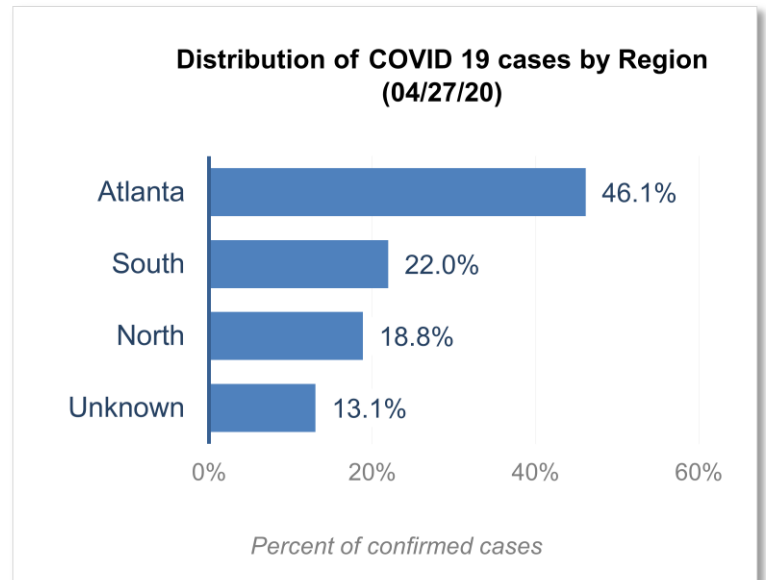


## DISTRIBUTION OF COVID-19 DIAGNOSES BY REGION

Fulton Region	% of current cases
Atlanta	46.1%
North <sup>1</sup>	18.8%
South <sup>2</sup>	22.0%
Unincorporated/Unknown	13.1%

<sup>1</sup>Includes all Fulton County cities north of Atlanta metro (Alpharetta, Milton, Johns Creek, Roswell, Sandy Springs, Mountain Park)

<sup>2</sup>Includes all cities south of Atlanta (College Park, Chattahoochee Hills, East Point, Hapeville, Palmetto, South Fulton, Fairburn, Union City)



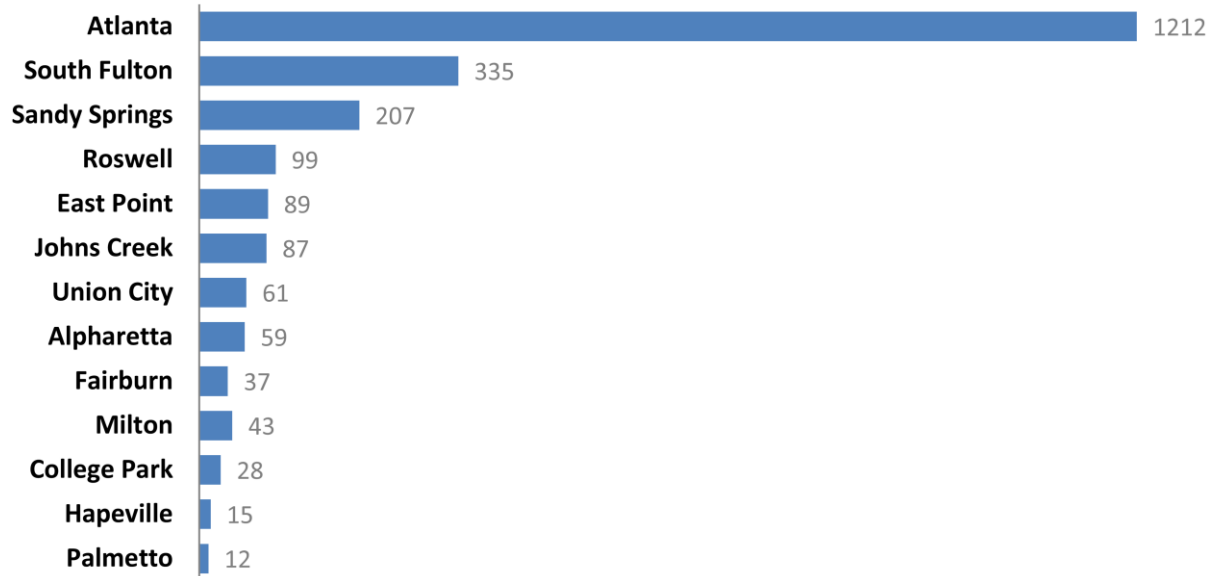
## DISTRIBUTION OF COVID-19 DIAGNOSES BY CITY

	Count (4/24/2020)	Count (04/27/20)	Percent of Current Total	Change (%)	COVID-19 Diagnoses Rate (per 100,000 persons)*
Atlanta	1154	1212	46.1%	5%	274.7
South Fulton	319	335	12.8%	5%	352.2
Sandy Springs	193	207	7.9%	7%	196.4
Roswell	91	99	3.8%	9%	105.0
East Point	82	89	3.4%	9%	254.5
Johns Creek	82	87	3.3%	6%	104.0
Union City	59	61	2.3%	3%	291.0
Alpharetta	54	59	2.2%	9%	91.2
Milton	41	43	1.6%	5%	112.7
Fairburn	36	37	1.4%	3%	251.6
College Park	25	28	1.1%	12%	201.8
Palmetto	12	12	0.5%	0%	274.5
Hapeville	15	15	0.6%	0%	227.9
Unknown	302	343	13.1%	-	-

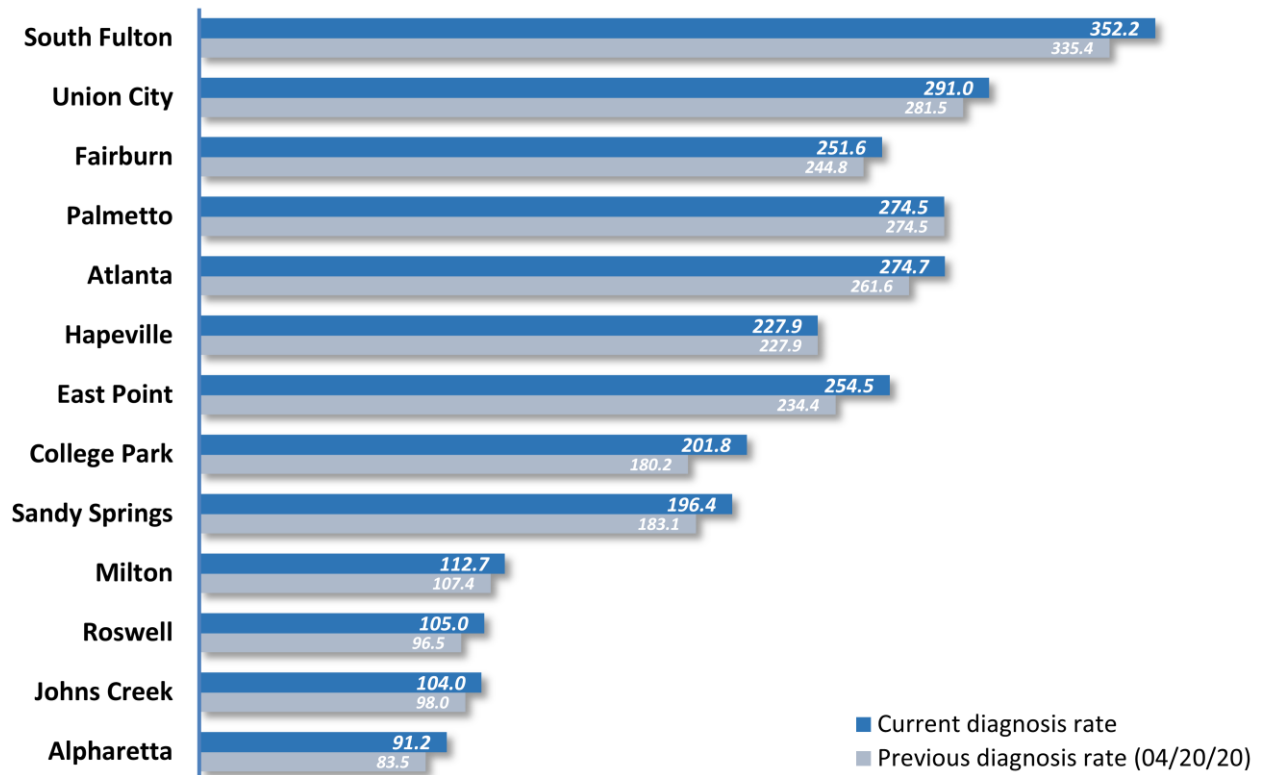
\*Source: US Census Bureau. Population estimates (as at July 1, 2018) used to calculate diagnoses rate. Please note that population count used to calculate diagnosis rate in Atlanta only reflects the Fulton County portion of the city (excludes 10% or thereabouts in DeKalb). This also applies to College Park's numbers (excludes the part in Clayton).

\*\* Data cleaning (either during detailed data collection that takes place at case interviews or during the geo-coding process) may lead to reassignment of few cases from one territory to another and these may appear as "decreases" when compared to the previous day's count. These do not reflect errors in the data collection or analysis process but only reflect the minor day-to-day fluctuations in case counts that arise in an evolving public health database like COVID's.

### Number of confirmed COVID-19 Diagnoses in Fulton County by City (04/27/20)

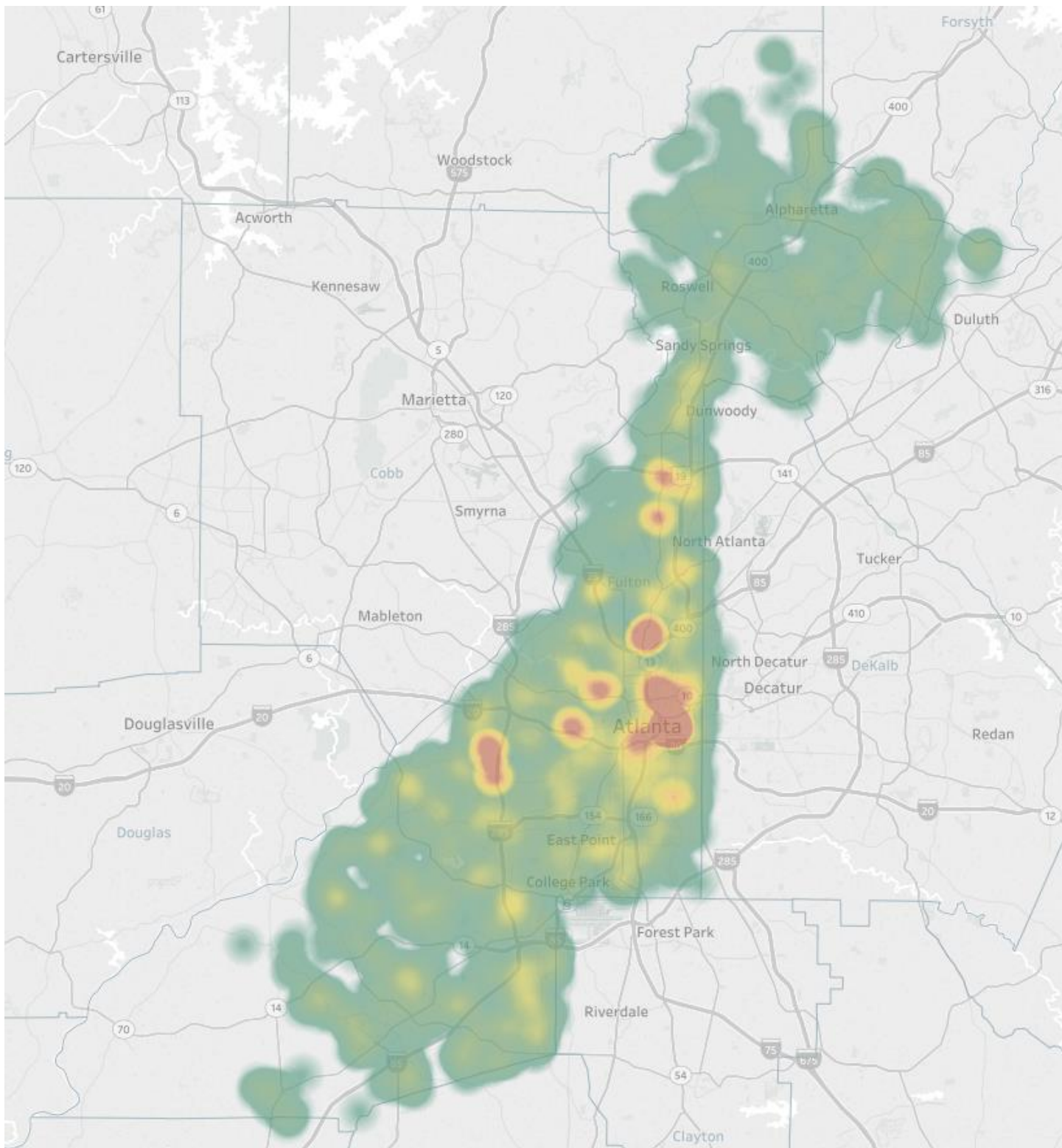


### COVID-19 Diagnoses Rate in Fulton County by City (04/27/20)

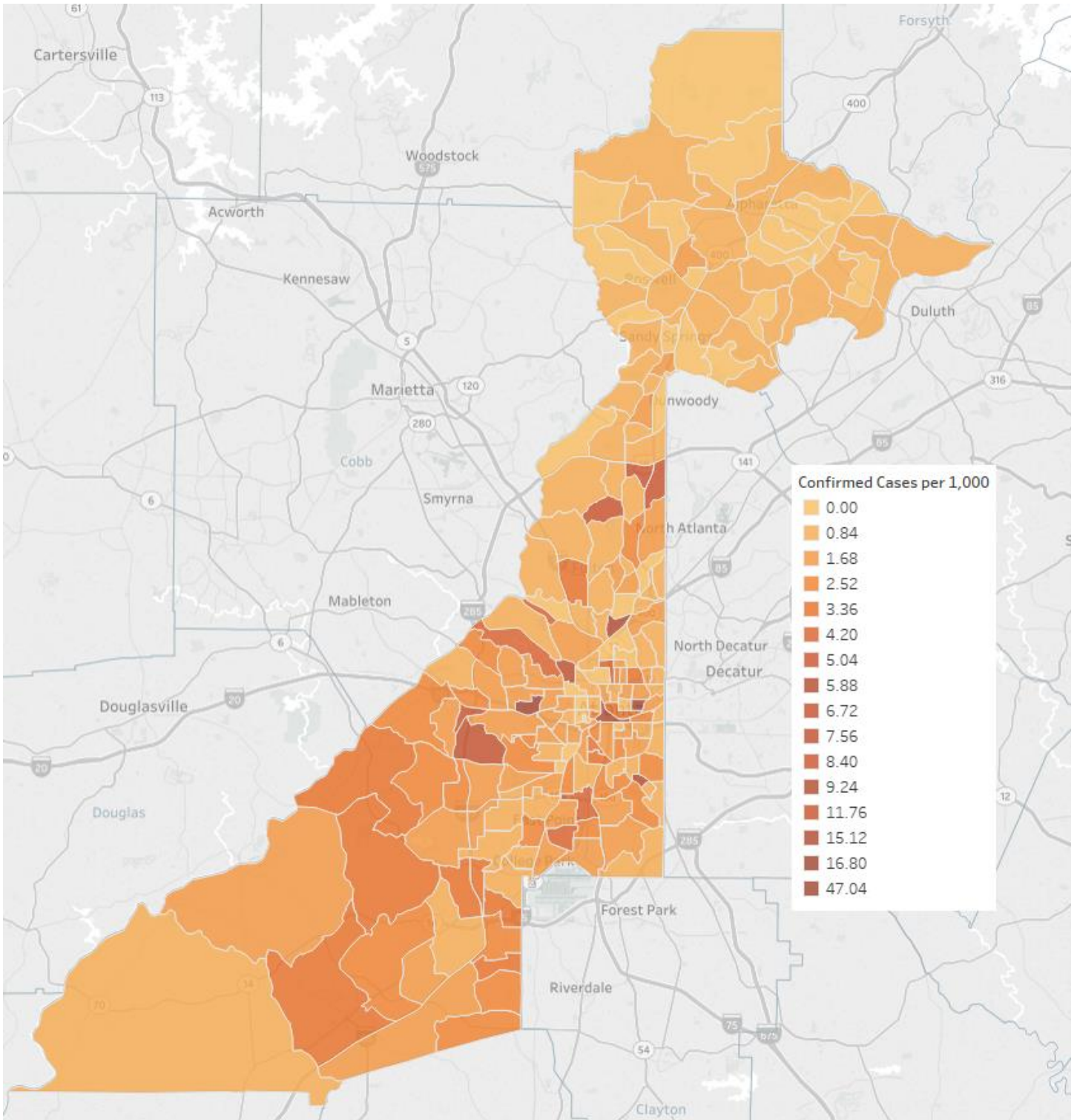


\*Rates shown are per 100,000 persons

Density Map of COVID-19 Cases in Fulton County (04/27/20)



**COVID-19 Distribution by Census Tract (04/27/2020)**



**DISTRIBUTION COVID-19 DIAGNOSES BY ZIP CODE**

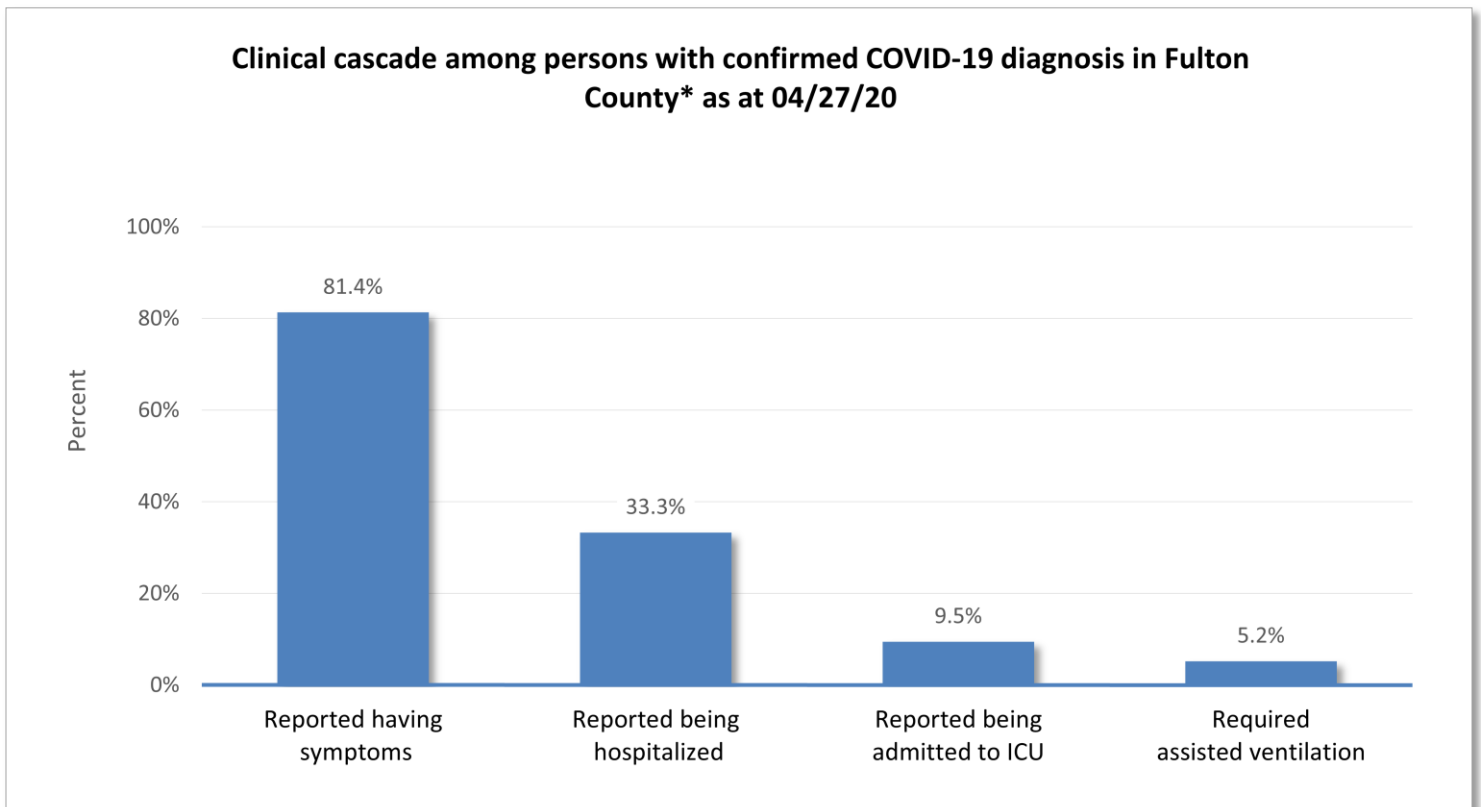
ZIP code	Count (4/24/2020)	Count (04/27/20)	Percent of Current Total	Change (%)
----------	-------------------	------------------	--------------------------	------------

30331	252	267	10.2%	6%
30318	139	142	5.4%	2%
30349	167	175	6.7%	5%
30213	101	107	4.1%	6%
30315	93	98	3.7%	5%
30344	79	86	3.3%	9%
30311	82	87	3.3%	6%
30342	107	114	4.3%	7%
30314	55	58	2.2%	5%
30310	61	66	2.5%	8%
30308	57	61	2.3%	7%
30022	64	69	2.6%	8%
30327	56	58	2.2%	4%
30004	54	57	2.2%	6%
30309	94	95	3.6%	1%
30076	47	50	1.9%	6%
30291	60	62	2.4%	3%
30350	46	48	1.8%	4%
30075	31	38	1.4%	23%
30328	49	53	2.0%	8%
30316	30	30	1.1%	0%
30312	151	161	6.1%	7%
30005	32	34	1.3%	6%
30305	44	46	1.8%	5%
30306	30	31	1.2%	3%
30324	42	44	1.7%	5%
30337	21	23	0.9%	10%
30009	21	24	0.9%	14%
30313	26	27	1.0%	4%
30326	15	15	0.6%	0%
30097	27	27	1.0%	0%
30354	22	24	0.9%	9%
30303	28	28	1.1%	0%
30339	<10	<10	0.3%	-
30268	15	15	0.6%	0%
30307	<10	<10	0.3%	-
30319	15	18	0.7%	20%
30336	<10	<10	0.3%	-
30296	<10	<10	0.3%	-
30363	<10	<10	0.2%	-
30301	<10	<10	0.1%	-
30345	<10	<10	0.2%	-
31131	<10	<10	0.1%	-
30023	<10	<10	0.1%	-
30080	<10	<10	0.1%	-
30135	<10	<10	0.0%	-
30138	<10	<10	0.0%	-
30139	<10	<10	0.0%	-
30321	<10	<10	0.1%	-
30340	<10	<10	0.2%	-

30341	<10	<10	0.3%	-
30358	<10	<10	0.0%	-
30374	14	13	0.5%	-7%**
30606	<10	<10	0.0%	-
31150	<10	<10	0.0%	-
Unknown	175	204	7.8%	-

\*\* Data cleaning (either during the detailed data collection that takes place at case interviews or during the geo-coding process) may lead to reassignment of few cases from one territory to another and these may appear as “decreases” when compared to the previous day’s count. These do not reflect errors in the data collection or analysis process but only reflect the minor day-to-day fluctuations in case counts that arise in an evolving public health database like COVID’s.

## CLINICAL CASCADE – FULTON COUNTY COVID-19 DIAGNOSES



\*Confirmed cases who have also been case interviewed and/or had their medical charts reviewed as at 04/27/20 (54.6% of current case count) only.