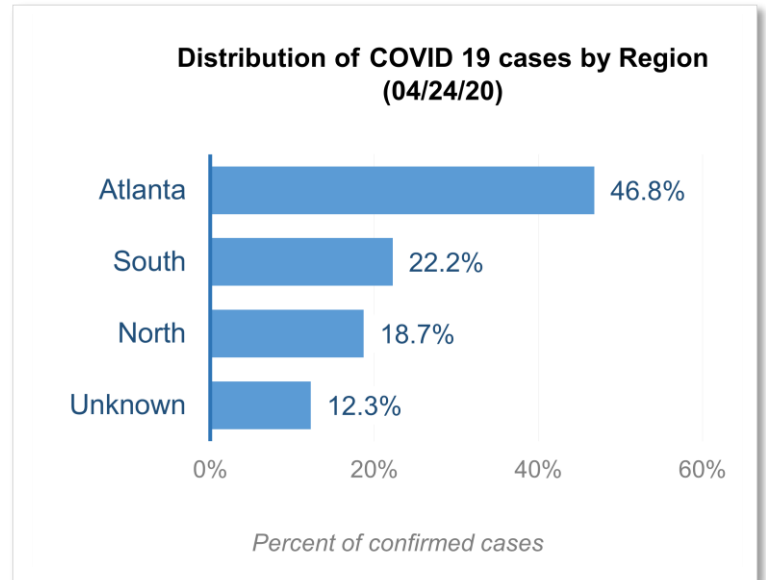


DISTRIBUTION OF COVID-19 DIAGNOSES BY REGION

Fulton Region	% of current cases
Atlanta	46.8%
North ¹	18.7%
South ²	22.2%
Unincorporated/Unknown	12.3%

¹Includes all Fulton County cities north of Atlanta metro (Alpharetta, Milton, Johns Creek, Roswell, Sandy Springs, Mountain Park)

²Includes all cities south of Atlanta (College Park, Chattahoochee Hills, East Point, Hapeville, Palmetto, South Fulton, Fairburn, Union City)



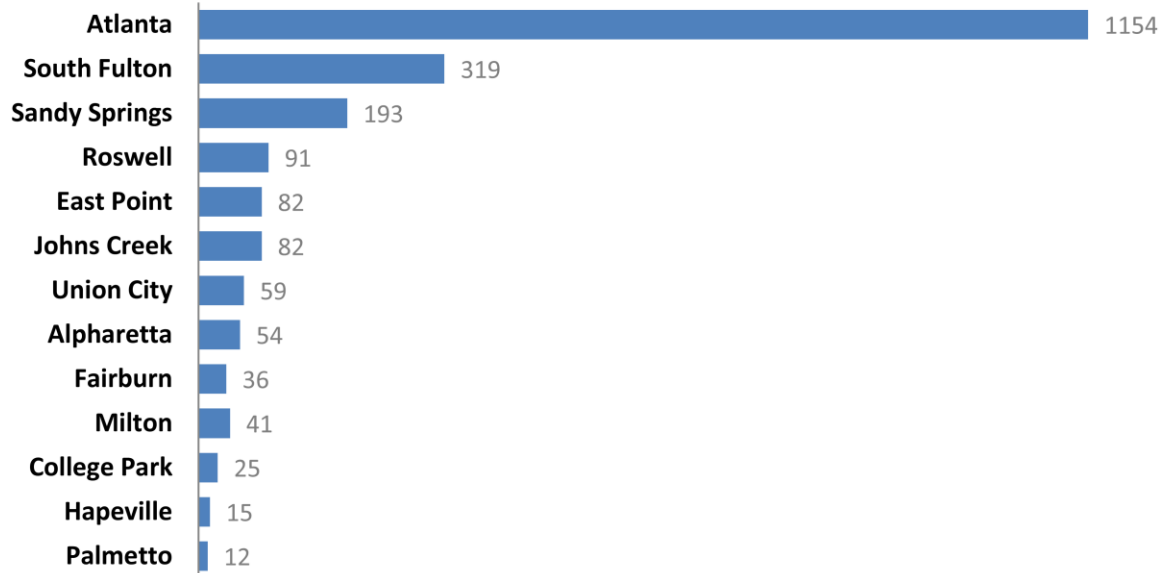
DISTRIBUTION OF COVID-19 DIAGNOSES BY CITY

	Count (4/22/2020)	Count (04/24/20)	Percent of Current Total	Change (%)	COVID-19 Diagnoses Rate (per 100,000 persons)*
Atlanta	1026	1154	46.8%	12%	261.6
South Fulton	306	319	12.9%	4%	335.4
Sandy Springs	176	193	7.8%	10%	183.1
Roswell	87	91	3.7%	5%	96.5
East Point	79	82	3.3%	4%	234.4
Johns Creek	78	82	3.3%	5%	98.0
Union City	55	59	2.4%	7%	281.5
Alpharetta	52	54	2.2%	4%	83.5
Milton	41	41	1.7%	0%	107.4
Fairburn	35	36	1.5%	3%	244.8
College Park	25	25	1.0%	0%	180.2
Palmetto	10	12	0.5%	20%	274.5
Hapeville	15	15	0.6%	0%	227.9
Unknown	317	302	12.3%	-	-

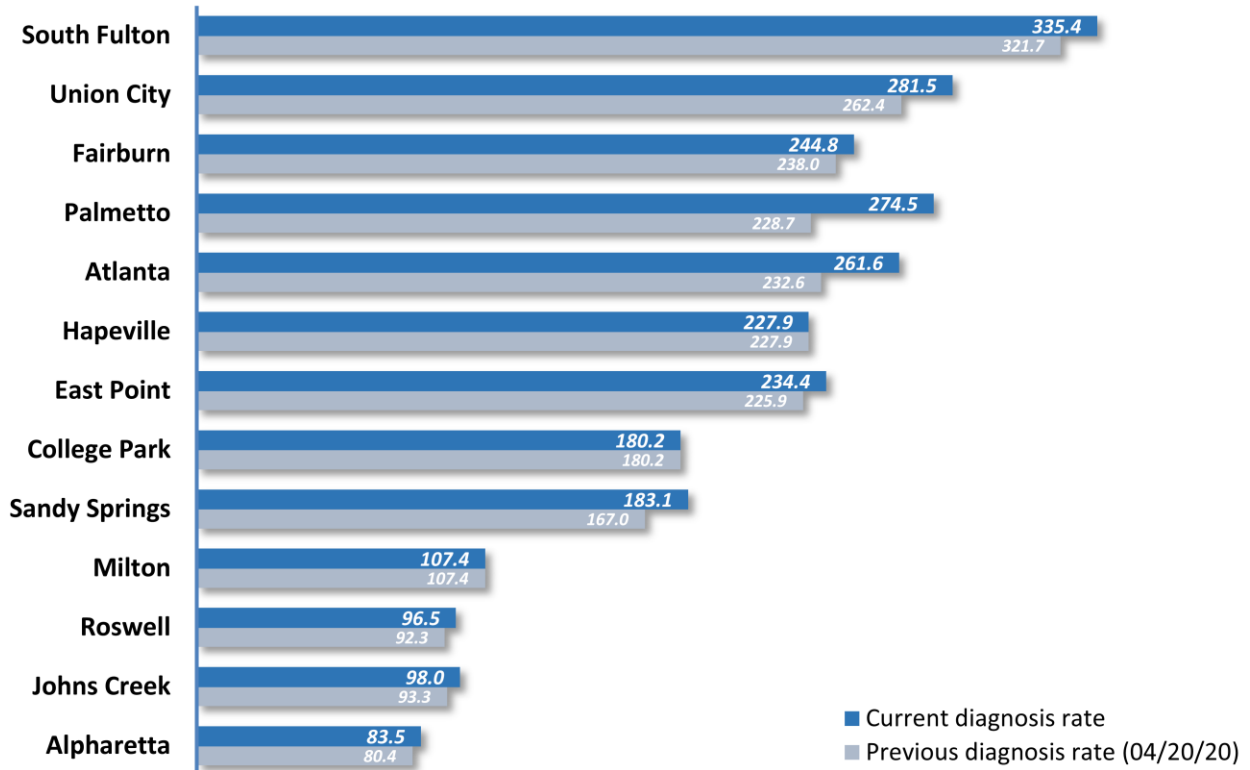
*Source: US Census Bureau. Population estimates (as at July 1, 2018) used to calculate diagnoses rate. Please note that population count used to calculate diagnosis rate in Atlanta only reflects the Fulton County portion of the city (excludes 10% or thereabouts in DeKalb). This also applies to College Park's numbers (excludes the part in Clayton).

** Data cleaning (either during detailed data collection that takes place at case interviews or during the geo-coding process) may lead to reassignment of few cases from one territory to another and these may appear as "decreases" when compared to the previous day's count. These do not reflect errors in the data collection or analysis process but only reflect the minor day-to-day fluctuations in case counts that arise in an evolving public health database like COVID's.

Number of confirmed COVID-19 Diagnoses in Fulton County by City (04/24/20)

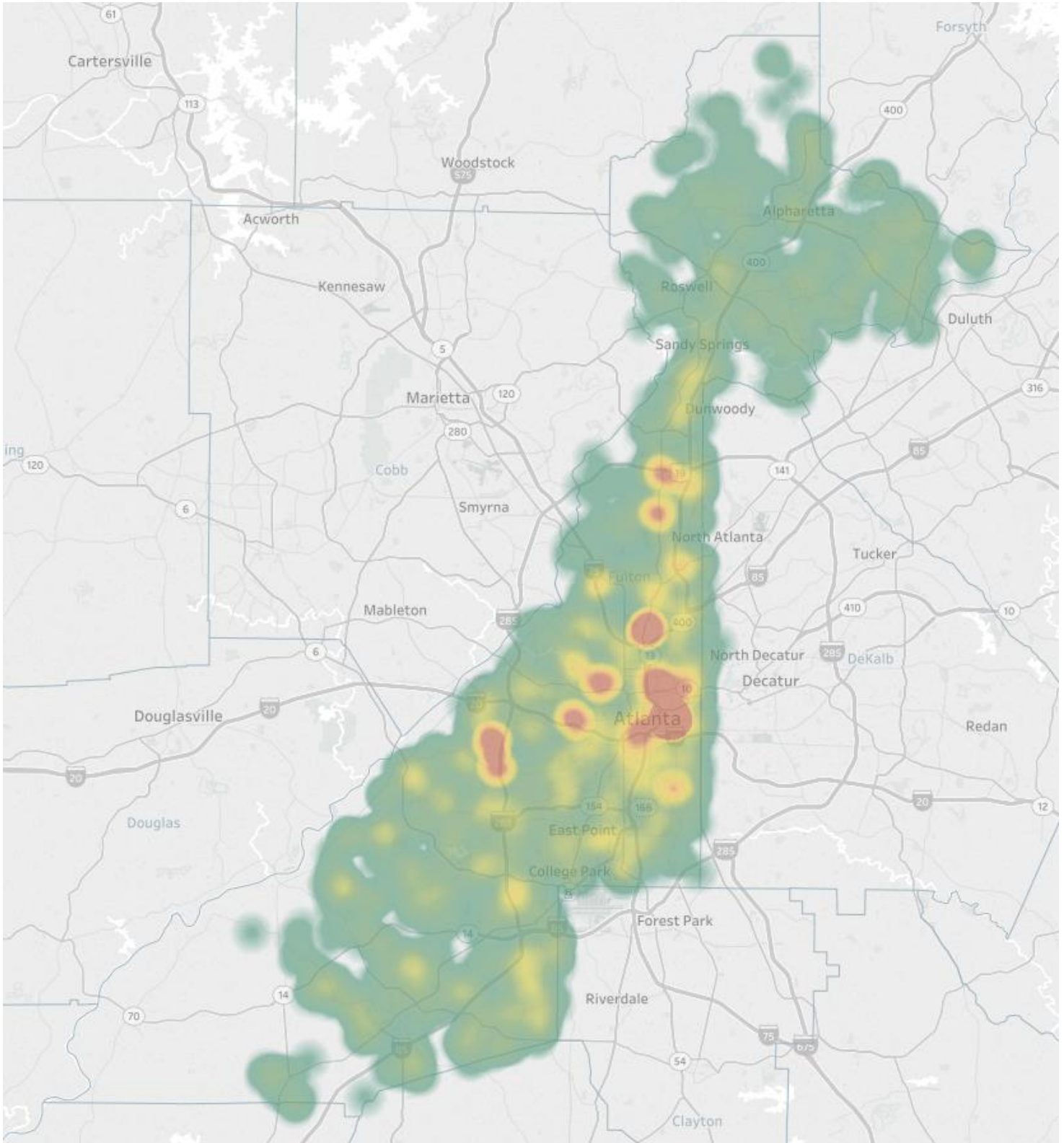


COVID-19 Diagnoses Rate in Fulton County by City (04/24/20)

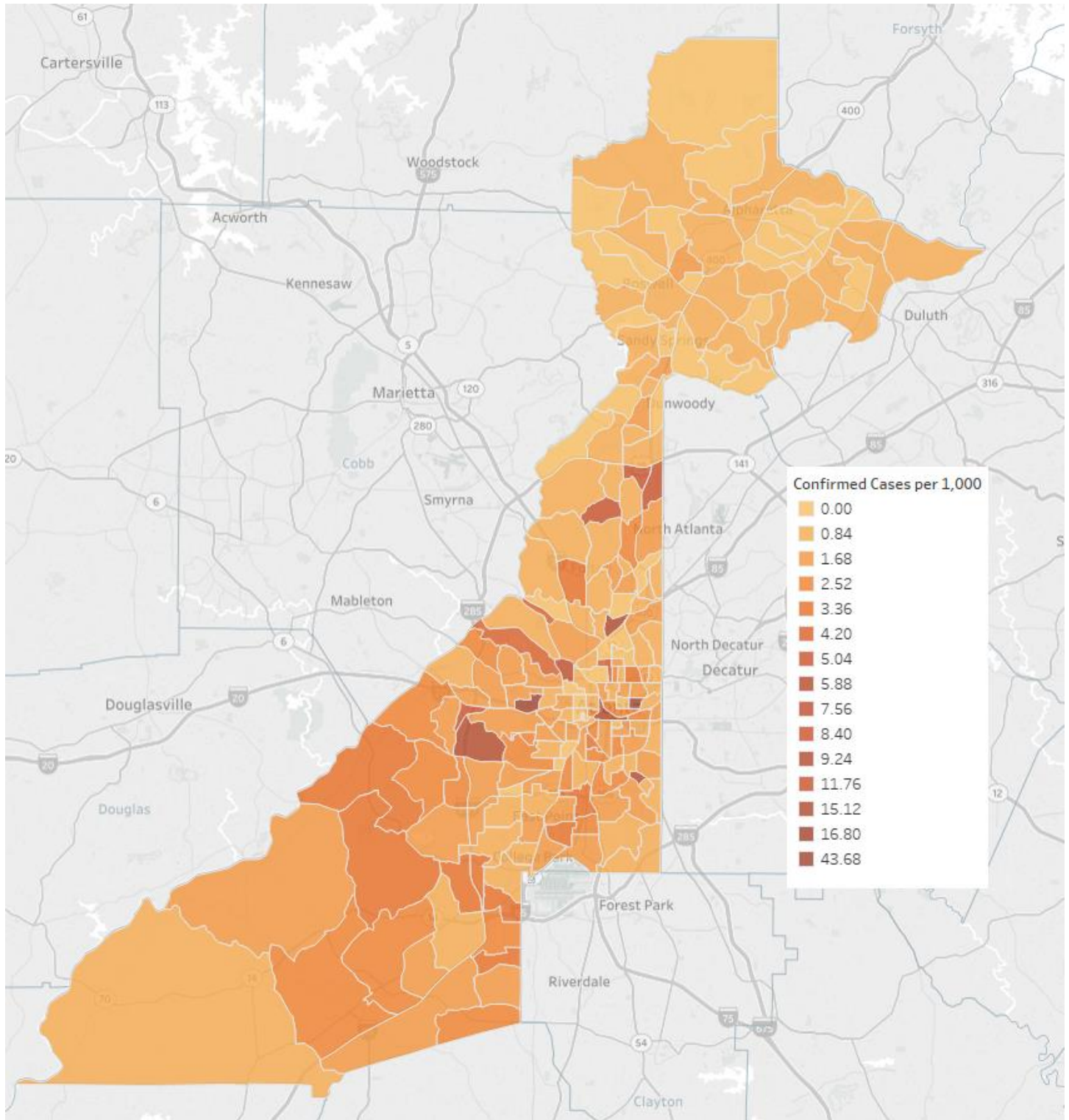


*Rates shown are per 100,000 persons

Density Map of COVID-19 Cases in Fulton County (04/24/20)



COVID-19 Distribution by Census Tract (04/22/2020)



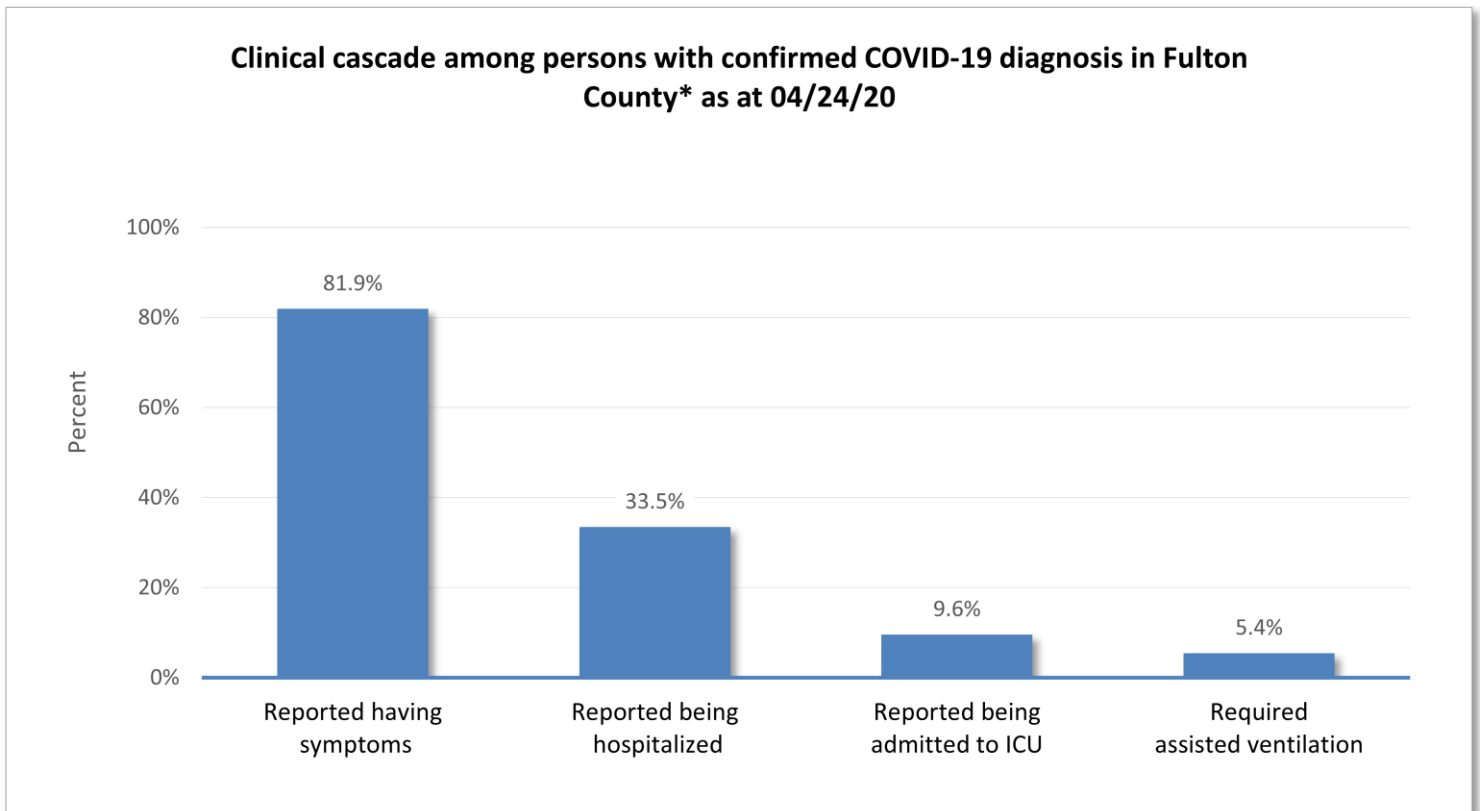
DISTRIBUTION COVID-19 DIAGNOSES BY ZIP CODE

ZIP code	Count (4/22/2020)	Count (04/24/20)	Percent of Current Total	Change (%)
30331	248	252	10.2%	2%
30318	136	139	5.6%	2%
30349	159	167	6.8%	5%
30213	98	101	4.1%	3%
30315	92	93	3.8%	1%
30344	75	79	3.2%	5%
30311	79	82	3.3%	4%
30342	104	107	4.3%	3%
30314	55	55	2.2%	0%
30310	60	61	2.5%	2%
30308	54	57	2.3%	6%
30022	62	64	2.6%	3%
30327	52	56	2.3%	8%
30004	52	54	2.2%	4%
30309	94	94	3.8%	0%
30076	44	47	1.9%	7%
30291	58	60	2.4%	3%
30350	43	46	1.9%	7%
30075	31	31	1.3%	0%
30328	49	49	2.0%	0%
30316	30	30	1.2%	0%
30312	56	151	6.1%	170%
30005	31	32	1.3%	3%
30305	42	44	1.8%	5%
30306	31	30	1.2%	-3%**
30324	38	42	1.7%	11%
30337	20	21	0.9%	5%
30009	20	21	0.9%	5%
30313	26	26	1.1%	0%
30326	17	15	0.6%	-12%**
30097	26	27	1.1%	4%
30354	22	22	0.9%	0%
30303	26	28	1.1%	8%
30339	<10	<10	0.3%	-
30268	13	15	0.6%	15%
30307	<10	<10	0.2%	-
30319	24	15	0.6%	-38%**
30336	<10	<10	0.3%	-
30296	<10	<10	0.4%	-
30363	<10	<10	0.2%	-
30301	<10	<10	0.1%	-
30345	<10	<10	0.2%	-
31131	<10	<10	0.1%	-
30023	<10	<10	0.1%	-
30080	<10	<10	0.1%	-
30135	<10	<10	0.1%	-

30138	<10	<10	0.0%	-
30139	<10	<10	0.0%	-
30321	<10	<10	0.1%	-
30340	<10	<10	0.2%	-
30341	<10	<10	0.2%	-
30358	<10	<10	0.0%	-
30374	13	14	0.6%	8%
30606	<10	<10	0.0%	-
31150	<10	<10	0.0%	-
Unknown/Other	162	175	7.1%	-

** Data cleaning (either during the detailed data collection that takes place at case interviews or during the geo-coding process) may lead to reassignment of few cases from one territory to another and these may appear as “decreases” when compared to the previous day’s count. These do not reflect errors in the data collection or analysis process but only reflect the minor day-to-day fluctuations in case counts that arise in an evolving public health database like COVID’s.

CLINICAL CASCADE – FULTON COUNTY COVID-19 DIAGNOSES



*Confirmed cases who have also been case interviewed and/or had their medical charts reviewed as at 04/24/20 (55.2% of current case count)