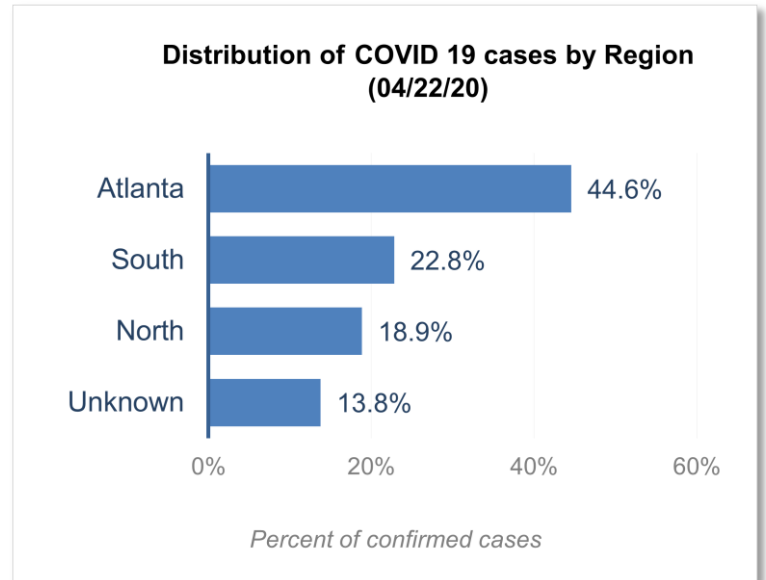


## DISTRIBUTION OF COVID-19 DIAGNOSES BY REGION

Fulton Region	% of all cases
Atlanta	44.6%
North <sup>1</sup>	18.9%
South <sup>2</sup>	22.8%
Unincorporated/Unknown	13.8%

<sup>1</sup>Includes all Fulton County cities north of Atlanta metro (Alpharetta, Milton, Johns Creek, Roswell, Sandy Springs, Mountain Park)

<sup>2</sup>Includes all cities south of Atlanta (College Park, Chattahoochee Hills, East Point, Hapeville, Palmetto, South Fulton, Fairburn, Union City)



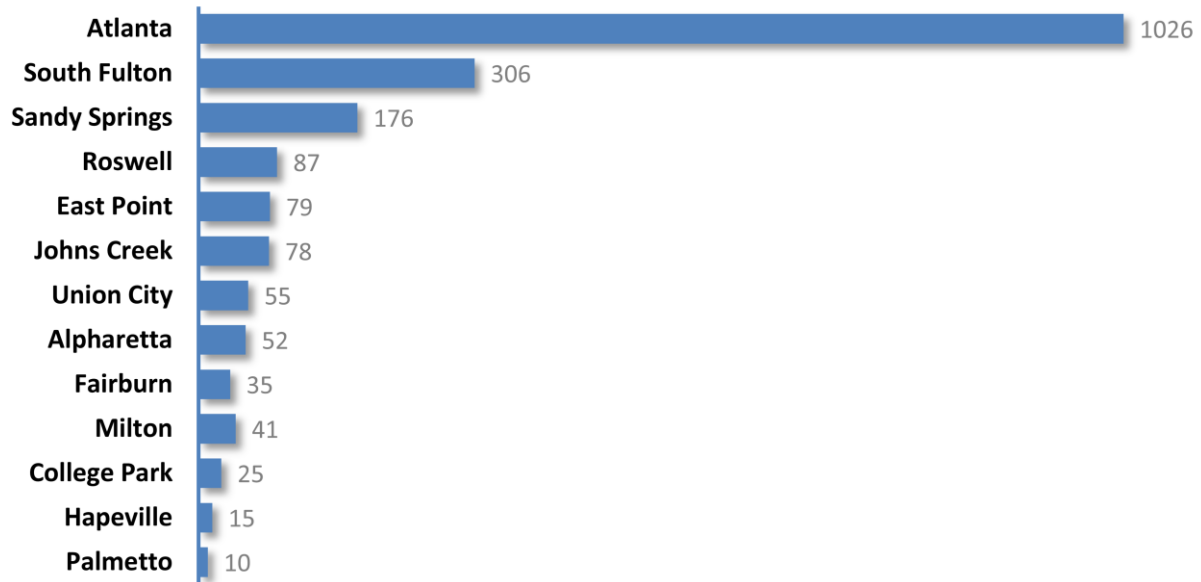
## DISTRIBUTION OF COVID-19 DIAGNOSES BY CITY

	Count (4/20/2020)	Count (04/22/20)	Percent of Current Total	Change (%)	COVID-19 Diagnoses Rate (per 100,000 persons)*
Atlanta	981	1026	44.6%	5%	232.6
South Fulton	291	306	13.3%	5%	321.7
Sandy Springs	183	176	7.6%	-4%**	167.0
Roswell	82	87	3.8%	6%	92.3
East Point	74	79	3.4%	7%	225.9
Johns Creek	74	78	3.4%	5%	93.3
Union City	51	55	2.4%	8%	262.4
Alpharetta	52	52	2.3%	0%	80.4
Milton	36	41	1.8%	14%	107.4
Fairburn	36	35	1.5%	-3%**	238.0
College Park	24	25	1.1%	4%	180.2
Palmetto	10	10	0.4%	0%	228.7
Hapeville	15	15	0.7%	0%	227.9
Unknown	250	317	13.8%	-	-

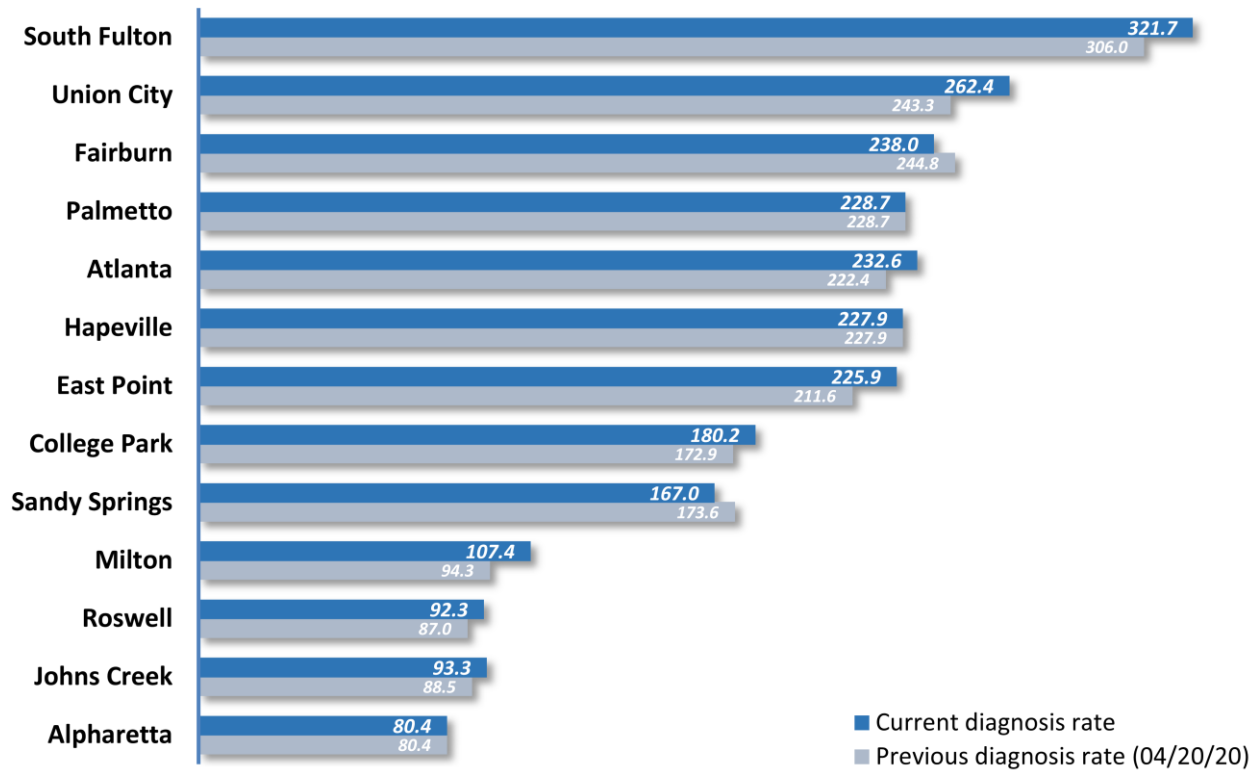
\*Source: US Census Bureau. Population estimates (as at July 1, 2018) used to calculate diagnoses rate. Please note that population count used to calculate diagnosis rate in Atlanta only reflects the Fulton County portion of the city (excludes 10% or thereabouts in DeKalb). This also applies to College Park's numbers (excludes the part in Clayton).

\*\* Data cleaning (either during detailed data collection that takes place at case interviews or during the geo-coding process) may lead to the reassignment of few cases from one territory to another and these may appear as "decreases" when compared to the previous day's count.. These do not reflect errors in the data collection or analysis process but only reflect the minor day-to-day fluctuations in case counts that arise during these data cleaning processes.

### Number of confirmed COVID-19 Diagnoses in Fulton County by City (04/22/20)

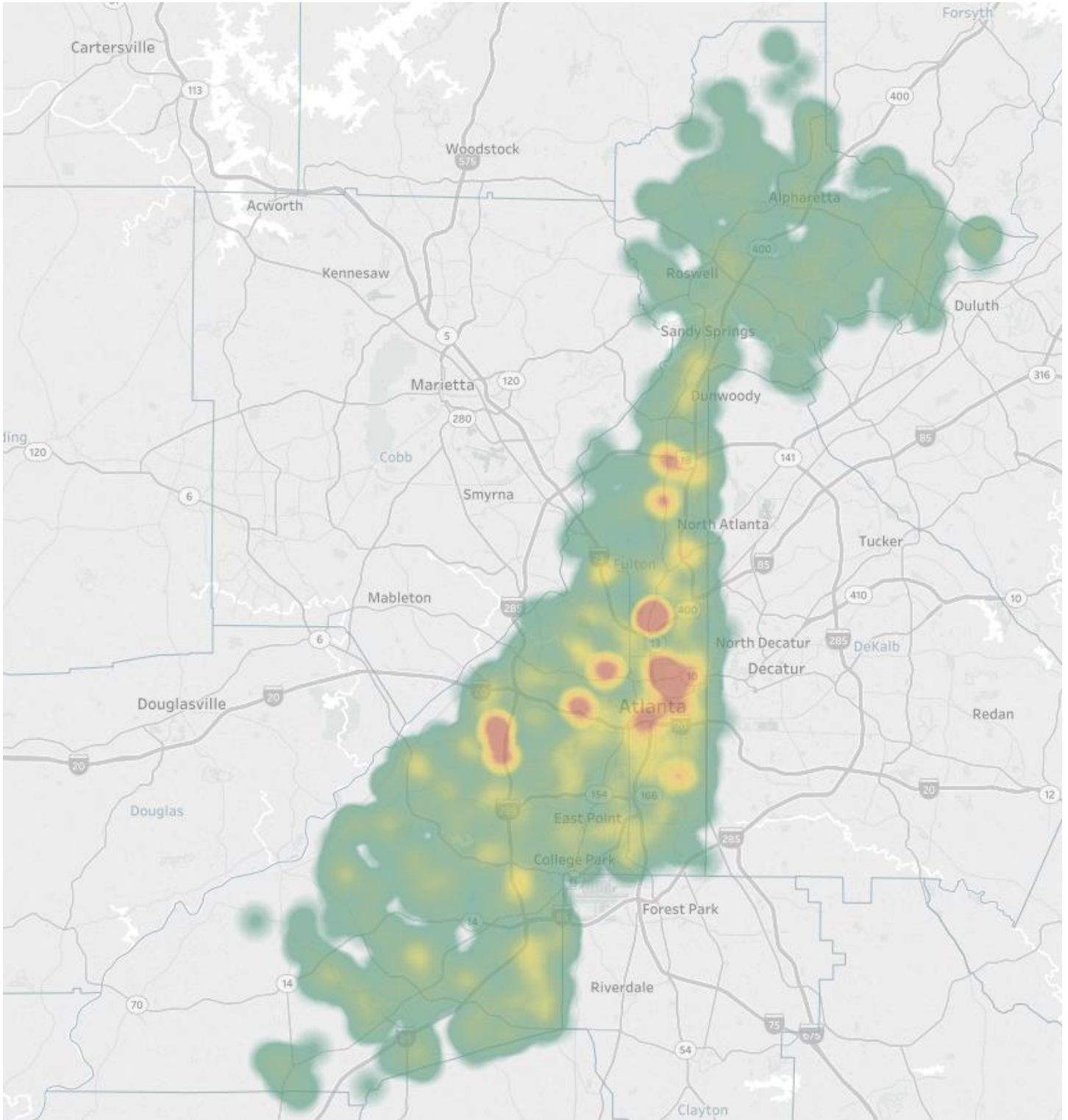


### COVID-19 Diagnoses Rate in Fulton County by City (04/22/20)

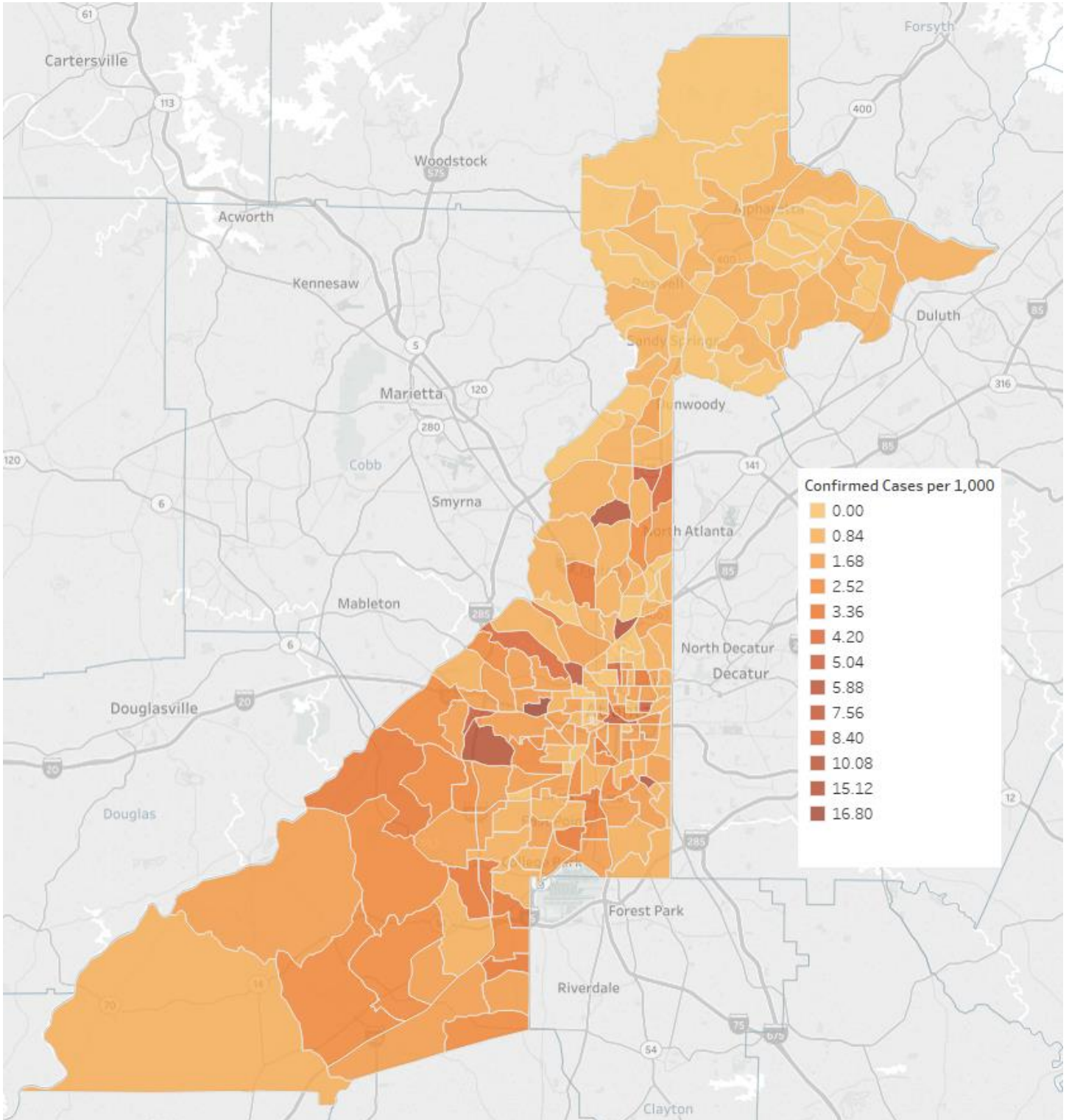


\*Rates shown are per 100,000 persons

Density Map of COVID-19 Cases in Fulton County (04/22/20)



COVID-19 Distribution by Census Tract (04/22/2020)

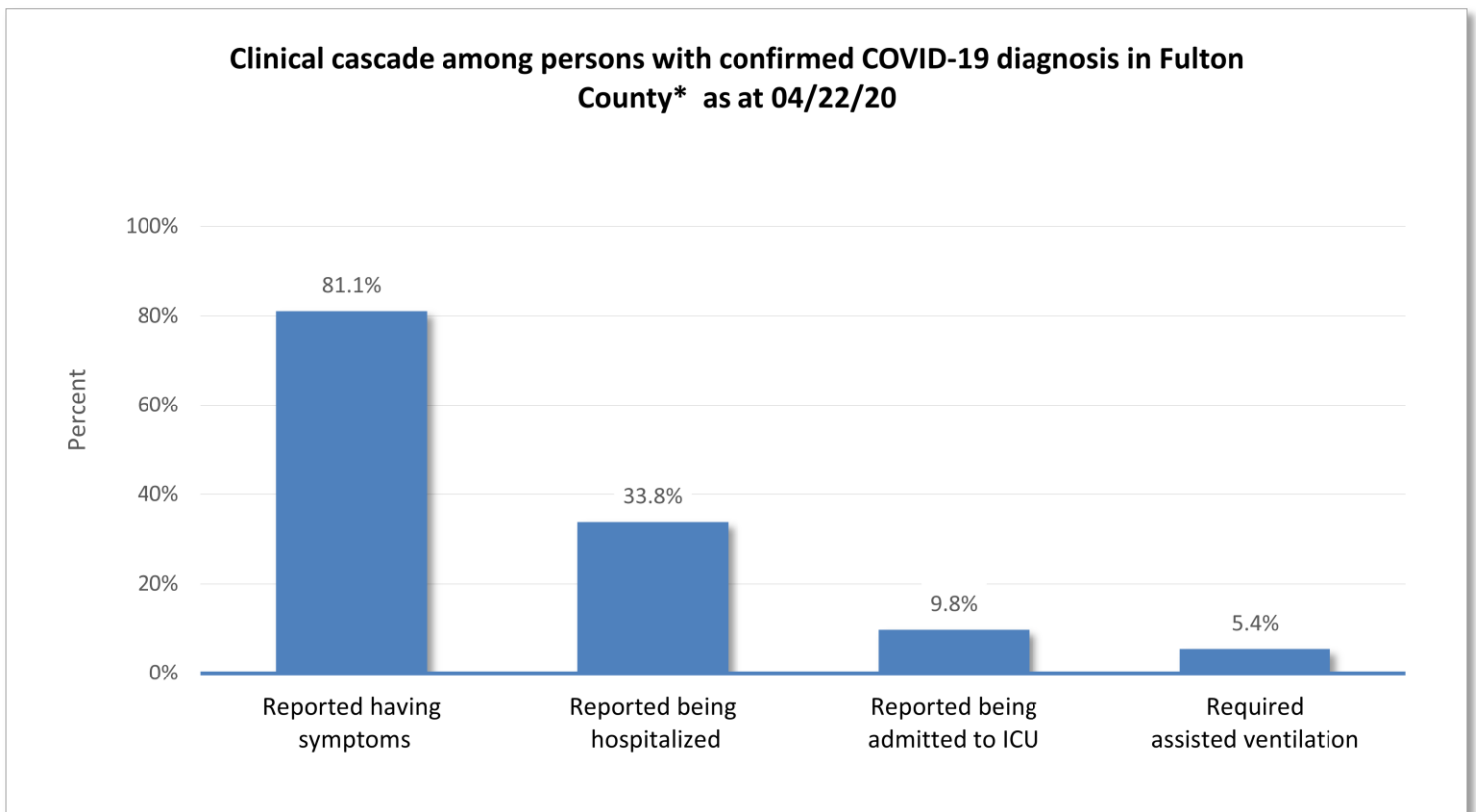


## DISTRIBUTION COVID-19 DIAGNOSES BY ZIP CODE

ZIP code	Count (4/20/2020)	Count (04/22/20)	Percent of Current Total	Change (%)
30331	244	248	10.8%	2%
30318	127	136	5.9%	7%
30349	146	159	6.9%	9%
30213	93	98	4.3%	5%
30315	84	92	4.0%	10%
30344	69	75	3.3%	9%
30311	71	79	3.4%	11%
30342	100	104	4.5%	4%
30314	55	55	2.4%	0%
30310	54	60	2.6%	11%
30308	53	54	2.3%	2%
30022	61	62	2.7%	2%
30327	49	52	2.3%	6%
30004	49	52	2.3%	6%
30309	93	94	4.1%	1%
30076	40	44	1.9%	10%
30291	54	58	2.5%	7%
30350	42	43	1.9%	2%
30075	31	31	1.3%	0%
30328	47	49	2.1%	4%
30316	28	30	1.3%	7%
30312	46	56	2.4%	22%
30005	30	31	1.3%	3%
30305	39	42	1.8%	8%
30306	30	31	1.3%	3%
30324	39	38	1.7%	-3%
30337	20	20	0.9%	0%
30009	19	20	0.9%	5%
30313	26	26	1.1%	0%
30326	17	17	0.7%	0%
30097	22	26	1.1%	18%
30354	22	22	1.0%	0%
30303	23	26	1.1%	13%
30339	<10	<10	0.3%	-
30268	13	13	0.6%	0%
30307	<10	<10	0.3%	-
30319	24	24	1.0%	0%
30336	<10	<10	0.3%	-
30296	<10	<10	0.4%	-
30363	<10	<10	0.2%	-
30301	<10	<10	0.1%	-
30345	<10	<10	0.2%	-
31131	<10	<10	0.1%	-
30023	<10	<10	0.1%	-

30080	<10	<10	0.1%	-
30135	<10	<10	0.1%	-
30138	<10	<10	0.0%	-
30139	<10	<10	0.0%	-
30321	<10	<10	0.1%	-
30340	<10	<10	0.0%	-
30341	<10	<10	0.2%	-
30358	<10	<10	0.0%	-
30374	11	13	0.6%	18%
30606	<10	<10	0.0%	-
31150	<10	<10	0.0%	-
Unknown	130	162	7.0%	-

### CLINICAL CASCADE – FULTON COUNTY COVID-19 DIAGNOSES



\*Confirmed cases who have also received case interviews and/or had medical charts reviewed as at 04/22/20 (54.2% of current case count)